

Cost-effectiveness Analysis of Tenofovir/Emtricitabine and Abacavir/Lamivudine in Combination With Efavirenz or Atazanavir/Ritonavir for Treatment-Naïve Adults With HIV-1 Infection in the United Kingdom

Edmund Wilkins,¹ Martin Fisher,² Anita J Brogan,³ Sandra E Talbird³

¹North Manchester General Hospital, Manchester, United Kingdom;

²Brighton and Sussex University Hospitals, National Health Service Trust, Brighton, United Kingdom;

³RTI Health Solutions, Research Triangle Park, NC, United States

BACKGROUND

- In 2012, there were an estimated 98,400 people living with human immunodeficiency virus (HIV) in the United Kingdom (UK).¹
- With life expectancies of people living with HIV approaching those of the general population,² lifelong antiretroviral therapy has resulted in rising treatment costs.³
- Selecting the most clinically effective and cost-effective first-line antiretroviral regimen may help to reduce costs, because first-line regimens provide the best chance for durable virologic suppression⁴ and are generally less expensive⁵ and associated with lower overall health care costs⁶ than subsequent lines.
- Tenofovir with emtricitabine (TDF/FTC) is the only preferred first-line regimen backbone in the current British HIV Association (BHIVA) guidelines.⁷
- However, economic analyses are needed to determine if TDF/FTC-based regimens are cost-effective compared with abacavir and lamivudine (ABC/3TC)-based regimens.
- The AIDS Clinical Trials Group (ACTG) 5202 clinical trial provides a unique head-to-head comparison of relevant first-line regimens for an economic analysis.
- The ACTG 5202 study was terminated early for participants with high baseline viral load because of inferior response among participants randomized to ABC/3TC-based regimens. BHIVA guidelines restrict ABC/3TC use in the UK to patients with a viral load of < 100,000 copies/mL.

OBJECTIVE

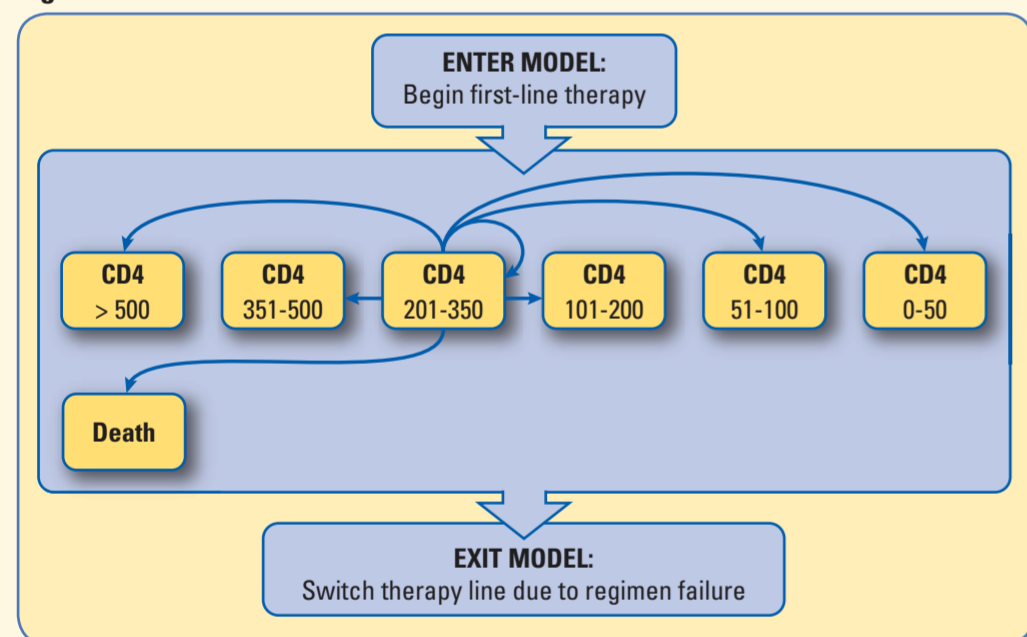
- To assess the cost-effectiveness of the four comparators examined in the ACTG 5202 clinical trial, TDF/FTC or ABC/3TC in combination with efavirenz (EFV) or atazanavir/ritonavir (ATV/r), for treatment-naïve adults with HIV-1 infection in the UK.

METHODS

Model Structure

- A Markov model with six CD4-based health states and a 1-year cycle was developed to estimate costs and health outcomes for individuals on first-line therapy (Figure 1).
- The model tracked individuals until death or regimen failure (i.e., virologic failure or discontinuation of first-line therapy due to tolerability or other reasons).
- Individuals accrued antiretroviral and other medical costs (2012 British pounds) and quality-adjusted life-years (QALYs) as they progressed through the model.

Figure 1. Markov Model Structure

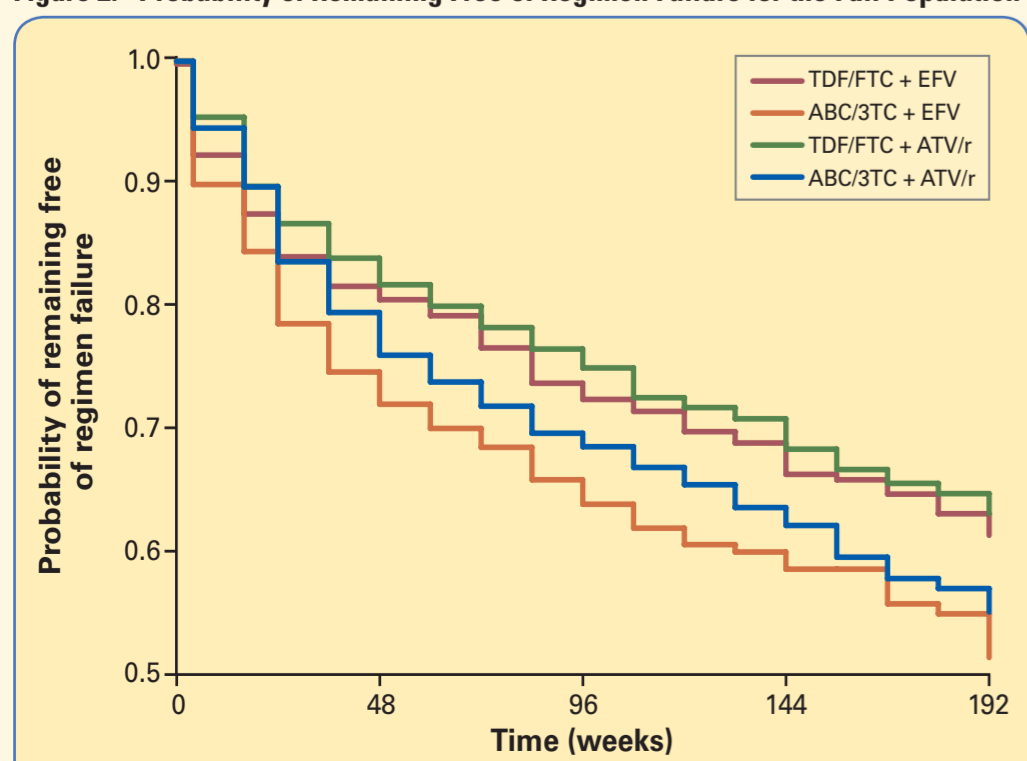


Note 1: In each cycle, individuals could remain in or transition to any health state. As an example, this figure displays all possible transitions from the 201-350 CD4-based health state.
Note 2: Individuals exited the model upon regimen failure (i.e., confirmed virologic failure [HIV RNA \geq 1,000 copies/mL at or after 16 weeks and before 24 weeks or \geq 200 copies/mL at or after 24 weeks] or discontinuation due to tolerability or other reasons).

Model Analyses

- Two analyses were conducted:
 - Full population (primary analysis)
 - Population with low baseline viral load (< 100,000 copies/mL) (secondary analysis)
 - Probabilistic sensitivity analyses and scenario analyses were conducted to determine whether results were sensitive to model inputs.
 - Because therapeutic tenders are commonplace in the UK, price reduction scenarios at various levels were conducted for illustrative purposes.
 - Results are shown for the primary analysis only, unless otherwise indicated.
- ### Input Parameters
- Head-to-head regimen efficacy data were available for up to 192 weeks for participants with low baseline viral load and up to 108 weeks for participants with high baseline viral load (due to early trial termination in this subgroup).⁸⁻¹⁰
 - Kaplan-Meier survival estimates for time to regimen failure (Figure 2) were used to estimate annual probabilities of switching off first-line therapies by fitting exponential curves to the data.
 - Changes in CD4 cell count (means and standard deviations [SDs]) (Table 1) were used to estimate annual transition probabilities.

Figure 2. Probability of Remaining Free of Regimen Failure for the Full Population



Note: Regimen failure is defined as virologic failure or discontinuation of first-line therapy due to tolerability or other reasons.

Table 1. Clinical Efficacy Data for First-Line Regimens for the Full Population⁸⁻¹⁰

Input Parameter	TDF/FTC + EFV	ABC/3TC + EFV	TDF/FTC + ATV/r	ABC/3TC + ATV/r
Immunologic response, mean (SD) CD4 cell-count increase, cells/mm ³ through year 3				
Baseline to 48 weeks	181 (127)	197 (139)	206 (150)	198 (150)
Baseline to 96 weeks	245 (169)	264 (174)	283 (184)	268 (184)
Baseline to 144 weeks	289 (169)	315 (204)	324 (180)	305 (190)
Modeled immunologic response after year 3 ^a				
Annual CD4 cell-count increase, cells/mm ³	22	26	21	19
Reason for switching therapy line (through 192 weeks)				
Virologic failure	14.4%	18.1%	14.3%	20.9%
Tolerability or other reasons	24.5%	30.6%	22.8%	24.2%

^a The model assumed that individuals who remained on therapy gained half as many cells in each year beyond year 3 of the trial as they did in year 3, with SDs extrapolated similarly.

- Characteristics of the modeled populations were based on characteristics of participants in the pooled, intent-to-treat population of ACTG 5202.
- Daily antiretroviral regimen costs for TDF/FTC + EFV, ABC/3TC + EFV, TDF/FTC + ATV/r, and ABC/3TC + ATV/r were £20.63, £18.42, £24.71, and £22.50, respectively.¹¹
- Costs for switching regimens due to virologic failure (£817.82) and tolerability/other reasons (£355.51) were based on physician visits and laboratory tests.
- Annual medical care costs, utility values, and HIV-related mortality rates were stratified by CD4 cell-count range (Table 2).
- Age- and gender-specific general population mortality was adjusted by a relative risk factor of 1.5 to account for higher non-HIV-related mortality in people with HIV.¹²

Table 2. Annual Medical Costs, Utility Values, and HIV-Related Mortality by CD4 Cell-Count Range, Mean (Range or Standard Error)

CD4 Cell-Count Range	Annual Medical Costs ^{3a}	Utility Values ¹²	Annual HIV-Related Mortality Rates ^{14b}
0-50	£34,657 (\pm 20%)	0.781 (0.009)	0.176 (0.021)
51-100	£34,657 (\pm 20%)	0.853 (0.007)	0.055 (0.008)
101-200	£16,540 (\pm 20%)	0.853 (0.007)	0.022 (0.003)
201-350	£10,501 (\pm 20%)	0.931 (0.007)	0.008 (0.001)
351-500	£6,721 (\pm 20%)	0.933 (0.006)	0.004 (0.001)
> 500	£6,721 (\pm 20%)	0.946 (0.006)	0.004 (0.001)

^a Annual medical costs exclude antiretroviral drug costs and were inflated to 2012 British pounds.

^b Rates were converted to probabilities in the model using: probability = $1 - e^{-rate}$.

RESULTS

Primary and Secondary Analysis Results

- In both analyses, individuals using TDF/FTC-based regimens remained on first-line therapy longer (Figure 3) and accrued more QALYs (Table 3) than individuals using ABC/3TC-based regimens.
- TDF/FTC + EFV had the lowest projected average cost per year on first-line therapy (£12,902 vs. £13,087-£14,488).
- Over the duration of first-line therapy, TDF/FTC-based regimens were cost-effective compared with ABC/3TC-based regimens, using a willingness-to-pay threshold of £30,000 per QALY gained (Table 3).

Figure 3. Projected Mean Time on First-Line Therapy by Regimen

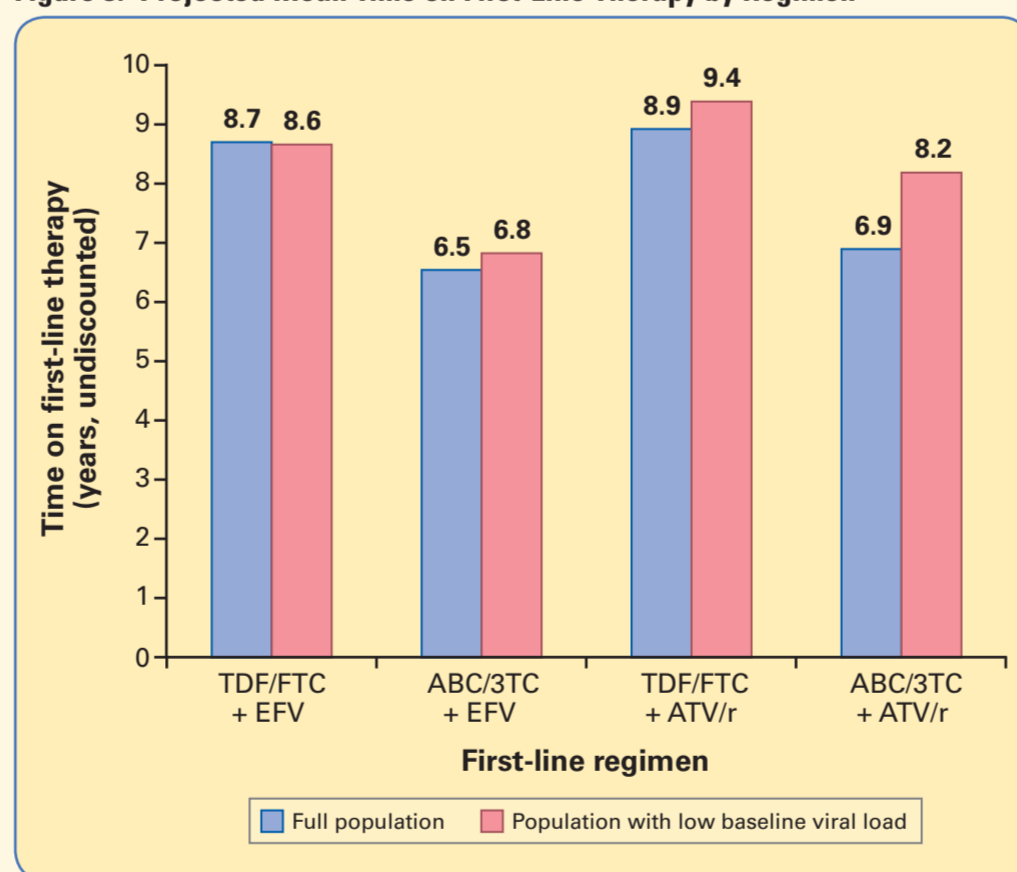


Table 3. Base-Case Results: Cost-effectiveness of TDF/FTC-Based Regimens Compared With ABC/3TC-Based Regimens

Outcome ^a	TDF/FTC + EFV	ABC/3TC + EFV	TDF/FTC + ATV/r	ABC/3TC + ATV/r
Primary analysis: full population				
Total costs	£111,882	£85,477	£124,302	£99,609
QALYs	6.30	5.02	6.45	5.26
Incremental cost per QALY gained ^b	£20,545		£20,652	
Secondary analysis: population with low baseline viral load				
Total costs	£109,304	£86,030	£129,581	£110,132
QALYs	6.28	5.22	6.71	6.03
Incremental cost per QALY gained ^b	£21,984		£28,651	

^a All health and cost outcomes were discounted at 3.5% per year.¹⁵

^b Incremental cost-effectiveness ratios are provided for each TDF/FTC-based regimen compared with the ABC/3TC-based regimen that contains the same third agent (EFV or ATV/r).

Sensitivity and Scenario Analysis Results

- Probabilistic sensitivity analysis results indicated that TDF/FTC-based regimens were optimal at willingness-to-pay thresholds between approximately £20,000 and £100,000 per QALY gained.
- Results of the analysis were robust in scenarios that tested discount rate, time horizon, and antiretroviral drug prices that reflect the UK market (Table 4).

Table 4. Selected Scenario Analysis Results: Cost-effectiveness of TDF/FTC-Based Regimens Compared With ABC/3TC-Based Regimens

Scenario	Incremental Cost per QALY Gained	
	TDF/FTC + EFV vs. ABC/3TC + EFV	TDF/FTC + ATV/r vs. ABC/3TC + ATV/r
Base case (primary analysis)	£20,545	£20,652
0% discount rate	£19,307	£19,779
5-year time horizon	£30,009	£27,966
10-year time horizon	£24,348	£23,468
Generic pricing for EFV ^a	£18,847	N/A
50% price reduction for ABC/3TC, UK acquisition cost for TDF/FTC	£22,833	£23,422
75% price reduction for ABC/3TC, UK acquisition cost for TDF/FTC	£27,332	£28,496

N/A = not applicable.

^a Daily price of £2.34 instead of the £6.68 list price.¹¹

LIMITATIONS

- Modeled first-line regimens and patient characteristics were based on the ACTG 5202 clinical trial, which included United States participants only.
- The analysis evaluated outcomes for patients while on first-line therapy only.
- Individuals could switch therapy due to virologic failure or other reasons, including treatment-related adverse events. However, this analysis considered only costs related to switching and did not consider other costs or utility decrements associated with adverse events; therefore, this analysis offers a conservative estimate of the cost-effectiveness of TDF/FTC-based regimens because of the improved safety profile of TDF/FTC compared with ABC/3TC.

DISCUSSION AND CONCLUSIONS

- In an analysis of the regimens examined in ACTG 5202, TDF/FTC-based regimens yielded more favorable health outcomes and were predicted to be cost-effective compared with ABC/3TC-based regimens in treatment-naïve adults with HIV-1 infection in the UK.
- TDF/FTC-based regimens remained cost-effective even when price discounts for ABC/3TC-based regimens were considered.
- Further analyses are needed using mixed-treatment comparisons and a systematic review of available trial data to further assess the cost-effectiveness of all preferred first-line and subsequent regimens in the UK.

FUNDING SOURCE AND ACKNOWLEDGEMENTS

- Funding for this study was provided by Gilead Sciences Europe, Ltd. Authors maintained independent scientific control over the study design and all analyses.
- The authors would like to thank the ACTG 5202 study team for providing additional analyses for our economic model.

REFERENCES

- Aghaizu A, Brown AE, Nardone A, et al. HIV in the United Kingdom: data to end 2012. London: Public Health England, 2013.
- May M, Gompels M, Sabin C. Life expectancy of HIV-1-positive individuals approaches normal, conditional on response to antiretroviral therapy: UK Collaborative HIV Cohort Study. *J Int AIDS Soc.* 2012;15(Suppl 4):18078.
- Mandalia S, Mandalia R, Lo G, et al. Rising population cost for treating people living with HIV in the UK, 1997-2013. *PLoS One.* 2010;5:e15677.
- Beck EJ, Mandalia S, Youle M, et al. Treatment outcome and cost-effectiveness of different highly active antiretroviral therapy regimens in the UK (1996-2002). *Int J STD AIDS.* 2008 May;19(5):297-304.
- Médecins Sans Frontières. Untangling the web of antiretroviral price reductions. 16th Edition. Geneva: Médecins sans Frontières, 2013.
- Snedecor SJ, Khachatryan A, Nedrow K, et al. The prevalence of transmitted resistance to first-generation non-nucleoside reverse transcriptase inhibitors and its potential economic impact in HIV-infected patients. *PLoS One.* 2013;8:e72784.
- British HIV Association Writing Group. British HIV Association guidelines for the treatment of HIV-1-positive adults with antiretroviral therapy 2012 (Updated November 2013). *HIV Med.* 2014;15:1-85.
- Daar ES, Tierney C, Fischl MA, et al. Atazanavir plus ritonavir or efavirenz as part of a 3-drug regimen for initial treatment of HIV-1: a randomized trial. *Ann Intern Med.* 2011;154:445-6.
- Sax PE, Tierney C, Collier AC, et al. Abacavir/lamivudine versus tenofovir DF/emtricitabine as part of combination regimens for initial treatment of HIV: Final results. *J Infect Dis.* 2011;204:1191-201.
- Sax PE, Tierney C, Collier AC, et al. Abacavir-lamivudine versus tenofovir-emtricitabine for initial HIV-1 therapy. *New Engl J Med.* 2009;361:2230-40.
- Monthly Index of Medical Specialties. Haymarket Medical Media, London. Available at: <http://www.mims.co.uk>. Accessed October 2013.
- Lewden C, Bouteloup V, De Wit S, et al. All-cause mortality in treated HIV-infected adults with CD4 \geq 500/mm³ compared with the general population: evidence from a large European observational cohort collaboration. *Int J Epidemiol.* 2012;41:433-45.
- Simpson KN, Luo MP, Chumney E, et al. Cost-effectiveness of lopinavir/ritonavir versus nevirapine as the first-line highly active antiretroviral therapy regimen for HIV infection. *HIV Clin Trials.* 2004;5:294-304.
- Mocroft A, Ledergerber B, Katlama C, et al. Decline in the AIDS and death rates in the EuroSIDA study: an observational study. *Lancet.* 2003;362:22-9.
- National Institute for Health and Care Excellence. Guide to the methods of technology appraisal 2013. Available at: <http://publications.nice.org.uk/pmg9>. Accessed March 2014.

CONTACT INFORMATION

Edmund Wilkins, MD
Clinical Director of Infectious Diseases Monsall Unit,
Department of Infectious Diseases and Tropical Medicine

North Manchester General Hospital
Crumpsall Manchester M8 5RB United Kingdom
Phone: +44 (0)7976 355 171
E-mail: edmundwilkins@manch.demon.co.uk

Presented at:
ISPOR 19th Annual International Meeting
May 31-June 4, 2014
Montreal, QC, Canada

